



Appian Case Management for Intelligence Missions

Shorten the intelligence cycle with process automation.

Intelligence workflows are complex for several reasons, including:

- Heavy reliance on data and services from disparate systems.
- Scattered assignments across multiple analysts.
- Collaboration across organizations.
- Demands for quality assurance and reviews before dissemination.

Optimize the intelligence cycle.

Appian Case Management for Intelligence Missions, built on the Appian low-code platform, automates intelligence production while providing an exceptional user experience. Whether applied to HUMINT, SIGINT, GEOINT, MASINT, OSINT, or other disciplines, Appian creates a modern, standardized, structured approach to automate and manage the end-to-end intelligence cycle of tasking, collection, processing, exploitation, and dissemination (TCPED).

You can use Appian Case Management for Intelligence Missions to:

- Modify structured workflows on the fly to handle complex cases and exceptions while maintaining compliance.
- Deliver a well-designed, intuitive, accessible user experience for intelligence professionals and decision-makers.
- Offload repetitive, manual tasks to robotic process automation (RPA) bots.
- Unify data from disparate sources with Appian's data fabric.
- Analyze processes for bottlenecks and identify areas for improvement with process mining.
- Monitor key performance indicators (KPIs) for quality and throughput in real time with advanced analytics.

Built using composable tools, the solution can be easily tailored to your unique intelligence community missions and workflows. It seamlessly integrates with your existing processes and technologies while setting you up for continuous improvement over time.

As the leader in case management for complex government use cases, Appian brings decades of experience with dozens of government customers.



Process automation in the intelligence cycle.

Appian optimizes and automates the intelligence cycle of tasking, collection, processing, exploitation, and dissemination (TCPED).



U.S. Department of Defense

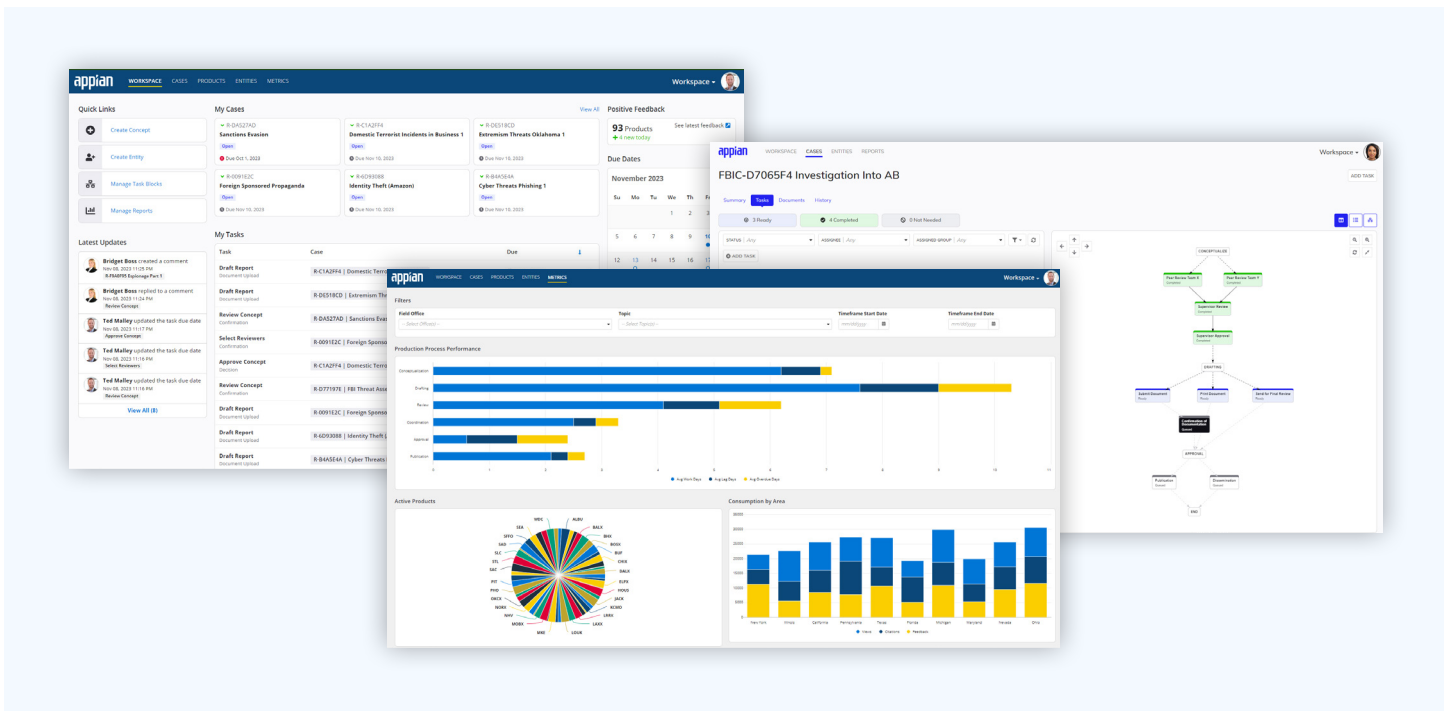
Acquisition management.

Appian revolutionizes contract writing and acquisition management across the DoD and intelligence community.



Investigative and counterintelligence case management.

Appian modernizes collaboration CI and investigative case management at the Air Force Office of Special Investigations (AFOSI).



Develop applications faster.

While the intelligence cycle is rigorous to ensure accuracy and quality, it is also driven by a need for speed. But intelligence professionals are hamstrung by disconnected data sources and a lack of thoughtfully applied AI. All-source analysts spend more time slogging through administrative work than applying their expertise.

Appian Case Management for Intelligence Missions reverses this equation by automating the repetitive administrative work and unifying an organization's existing, disparate intelligence tools in a single, intuitive application where analysts can collaborate and produce their best work at speed.

Dynamic case management.

- End-to-end case management with easy-to comprehend, dashboard-style views.
- Configurable templates that allow you to define specific workflows for various intel product types.
- Workflow visualizations showing progression through the lifecycle of a case.
- Automated case routing and monitoring.

Outstanding user experience and visual metrics.

- Intuitive, modern customer portal enables self-service and collaboration with your teams.
- Secure messaging provides an email-like experience delivered via a secure portal.
- Interactive, customizable reporting metrics allow analysts and leaders to see the health of their organization and process in real time without having to resort to time-consuming data calls.

Fast, flexible implementation.

- Flexibility to extend and customize apps to fit your needs.
- Composable, modular services allow for very fast workflow creation.
- Ability to combine structured processes and dynamic, ad hoc workflows, as needed.
- Flexible data modeling enables integration with other data sources to enrich case detail and reporting.

Learn more at appian.com.
Contact info@appian.com.