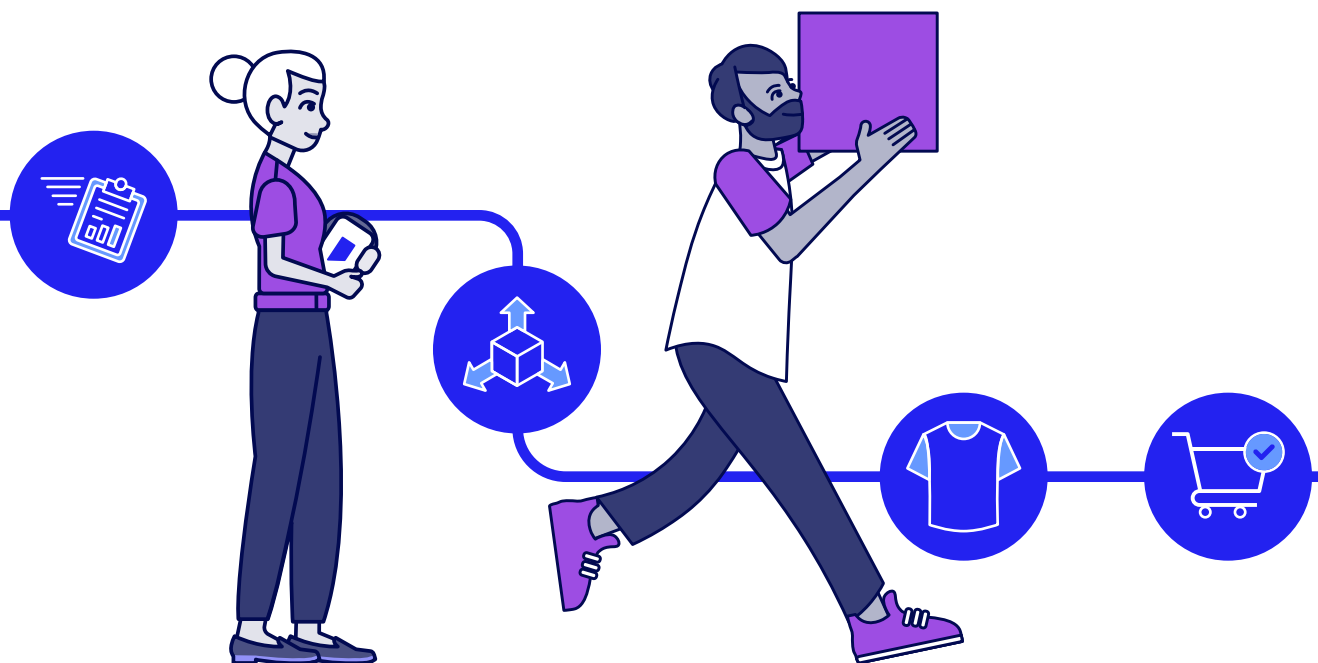


7 Aggravating Supply Chain Risks to Prevent

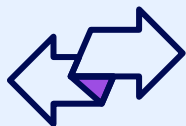
Brittle supply chains have led to squeezes on critical goods and services. While the COVID-19 pandemic kick-started the problems, disruptions have since become the norm. Below are seven risks you should track to ensure a more resilient, adaptable supply chain.



Public health events.

Widespread pandemic shutdowns and community health outbreaks cause border closures and reduce production in critical nations.

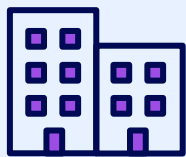
► **Example:** Border and plant shutdowns caused by things like China's zero-COVID policy.



Rapid demand shifts.

Dwindling supplies cause panic buying and attempts to purchase and resell products, leading to overwhelming demand.

► **Example:** Toilet paper shortages in the US.



Plant shutdowns.

Manufacturing suddenly stops due to safety concerns.

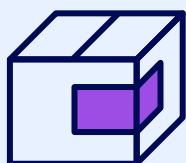
► **Example:** Factory fires causing unplanned downtime.



Geopolitics.

Political tensions restrict access to goods and cause shortages in other areas.

► **Example:** Gas shortages due to sanctions or import bans.



Shipping delays.

Bottlenecks in shipping routes or shortages of needed shipping containers slows down delivery.

► **Example:** A ship blocking trade routes in the Suez canal.



Climate problems.

Natural disasters are increasing both in number and severity due to climate change.

► **Example:** Severe weather events causing long power outages and blocked delivery routes.



Labor shortages.

Industries unable to fill enough positions to continue distributing goods on time and in full.

► **Example:** Truck driver and dock worker positions largely going unfilled.



Adapting to supply chain shocks.

Thriving through supply chain disruptions requires gaining visibility—discover how in [Bringing Clarity to Supply Chain Chaos](#).

[Get the eBook](#)